



Judging Terminology

This fact sheet is intended to help judges develop a broad vocabulary for placing meat goats and providing reasons. Producers can also benefit from an understanding of judging terminology in order to better apply judges' feedback to their breeding and management programs.

Breeding animals are generally placed on a combination of:

- * Growth potential - frame
- * Structural Correctness
- * Body capacity or volume
- * Muscle
- * Balance
- * Femininity / Masculinity



Market animals are generally placed on a combination of the above traits (with the exception of femininity/masculinity) plus:

- * Condition / Carcass Desirability

GROWTH POTENTIAL – FRAME TERMINOLOGY

ADVANTAGES

Larger framed
Larger, growthier
More size and scale
Greater length and extension
through front end
More future growth and outcome
Appears to be faster growing
Higher weight per day of age

CRITICISMS

Smaller framed
Less future and outcome
Earlier maturing

Quicker patterned
Lower weight per day of age
Lacks size and scale

STRUCTURAL CORRECTNESS TERMINOLOGY

ADVANTAGES

More correct bite
Larger testicles
More functional udder
More desirable size/number of teats
More structurally correct
on feet and legs
Tracks wider and truer in front/rear
Squarer on feet and legs
Truer tracking
Exhibits more style and erectness
when traveling
More desirable slope of shoulder
More angle to shoulder

CRITICISMS

Incorrect bite
Parrot mouth
Mouth is out
Small testicles

Udder problems
Weak top
Weak/down in the pasterns
Hocks in/cow hocked

Splays out/toes out in the front
Steep rumped
Short hip/rump



More correct/desirable

set to pastern

Longer, freer striding

Freer, more fluid/flexible stride

Easier, freer moving

Traveled freer off front and rear legs

Neck blends more smoothly

into shoulders

Shoulder blades set tighter

against chest wall

Smoother, cleaner through shoulders

Stronger, more level top

More nearly level from hooks to pins

Straighter/stronger/more correct in the foreleg

when viewed from the front/side

More width between fore/rear legs

Legs placed more squarely under body

More desirable set/squareness to

the rear leg when viewed from

the rear, being wider between

the hocks

More correct set to the rear legs when viewed from

the side, being more perpendicular from hock to pastern

Short bodied

Post legged

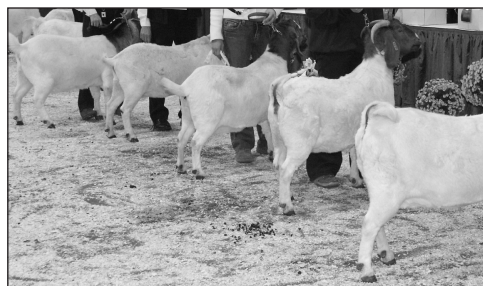
Sickle hocked

Buckles over in front

Restricted in movement

Straight shouldered

Short, tight strides off both ends



BODY CAPACITY OR VOLUME TERMINOLOGY

ADVANTAGES

More capacious

Higher volume

More overall dimension and capacity

Longer, deeper bodied

Wider chested

Bolder sprung

Broad through the chest floor

More spring of rib

Deeper and more expandable in the rib

More circumference of heart

Deeper in the heart girth

More substance of bone

Feminine wedge shape

Broodier (does only)

Rugged (bucks only)

Longer bodied/loin/rump

Deeper ribbed

CRITICISMS

Tight ribbed

Narrow gauged

Narrow chested

Shallow bodied

Constricted in the fore rib

Narrow through the chest floor

Lacks volume/depth/capacity

Slab sided

Lacks spring of rib

Pinched behind the shoulders

Sharp through the rack

Frail

Short bodied/loin/rump

MUSCLE TERMINOLOGY

ADVANTAGES

Heavier muscled
More expressively muscled
More volume of muscle
More natural thickness
Thicker topped
More muscle expression in
shoulder/forearm/loin/rump/leg
Thicker in the loin/lower leg
Meatier topped
Wider from stifle to stifle
Thicker, squarer rump/hip
Deeper through the twist
More uniform width from hooks to pins
Wider tracking
Wider chested
More forearm muscling

CRITICISMS

Light muscled
Flat legged
Flat/narrow loin
Tapered into lower leg
Tapers from hooks to pins
Narrow tracking
Narrow chested

BALANCE TERMINOLOGY

ADVANTAGES

More style and balance
More stylish
Cleaner patterned
Nicer balanced
Well balanced
More eye appealing
Nicer profiling
Smoother
More level top/hip/rump
Squarer hip/rump

CRITICISMS

Coarse
Weak topped
Ill made
Poorly balanced
Steep hip/rump

FEMININITY TERMINOLOGY

ADVANTAGES

Exhibits more feminine wedge
More femininity through head,
neck, and shoulder
More angular fronted
Longer, cleaner necked

CRITICISMS

Lacks femininity

Coarse fronted
Coarse shouldered
Short necked



Smoother blending through the front end
Blends smoother through
neck-shoulder junction
Blends smoother from shoulder to fore rib

Too masculine

Wasty fronted
Coarser made

MASCULINITY TERMINOLOGY

ADVANTAGES

More rugged
More masculine
More testicular development
Cleaner fronted

CRITICISMS

Refined
Frail
Small testicles
Too feminine

CONDITION / CARCASS DESIRABILITY TERMINOLOGY

ADVANTAGES

Leaner
More correctly finished
More desirable degree of finish
Freer from fat through lower 1/3 of body
Freer of fat behind shoulder (shoulder pocket)
Trimmer through the breast and over the ribs
Hang on the rail a meatier/leaner/
more muscular carcass
Fresh
Hang on the rail a carcass with a higher percent
of the four major retail cuts

CRITICISMS

Fatter
Wastier
Over finished
Excessive degree of finish
Under finished
Wasty through breast and over ribs
Stale/washed out
Hang on the rail a carcass requiring
more fat trim

*Dr. Frank Craddock
Extension Sheep and Goat Specialist
San Angelo, Texas*



Agriculture and
Agri-Food Canada

Agriculture et
Agroalimentaire Canada

Canada

Agriculture and Agri-Food Canada (AAFC) is pleased to participate in the production of this publication. AAFC is committed to working with our industry partners to increase public awareness of the importance of the agriculture and agri-food industry to Canada. Opinions expressed in this document are those of the Canadian Meat Goat Association and not necessarily AAFC's. / C'est avec plaisir qu'Agriculture et Agroalimentaire Canada (AAC) participe à la production de cette publication. Avec nos partenaires du secteur nous nous engageons à sensibiliser davantage les Canadiens et Canadiennes à l'importance de l'agriculture et l'industrie agroalimentaire au pays. Les opinions exprimées dans cette publication sont celles de l'association canadienne de la chèvre de boucherie et non pas nécessairement celles d'AAC.